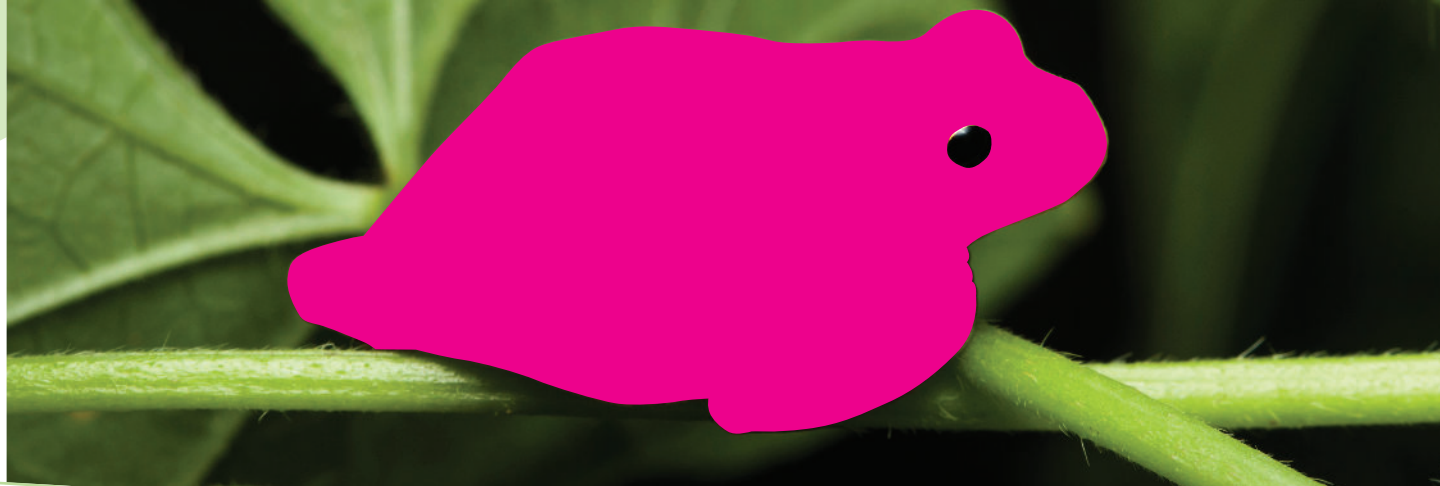


Clear Dry Ink

DESIGN TIPS AND TECHNIQUES FOR PRINTING WITH CLEAR DRY INK (VARNISH)



Simply applying a spot varnish or flood of clear dry ink over your image or page can have a dramatic effect on your design.

Spot treatment

Specify clear dry ink to print only in specifically designated areas.

- **Spot over a photograph** — Evens out the overall sheen and adds depth to your image.
- **Spot over a solid colour** — Increases the depth and overall sheen of that colour.

Or, mimics a subtle tinted varnish effect by adding clear dry ink over a light tint.

- **Watermark** — Graphics or text printed with clear dry ink with no colour or image below.

Flood coating

To “flood” your printed piece with clear dry ink is to cover the whole sheet with it.

- Provides an even sheen and a smooth, consistent look across an image.
- Enhances digital image quality on textured stock.

Metallic

Print clear dry ink over Pantone metallic colours simulated in CMYK.

- Produces a metallic effect, especially when printed over light tints of simulated metallic colours.

Watermark

Using clear dry ink is a great way to print watermarks on your pieces.

- Provides notice for copyrighted materials or adds a graphic element to discourage copying of coupons or tickets. Watermarks can repeat across the entire page and are a nice way to add a soft graphic element to your design to quietly reinforce your message or evoke a mood.

Setting up your InDesign file

1. Add a new layer in the layers pallet and name it **Clear**.
2. Move the **clear layer** to the top in the layers pallet.
3. Add a new colour in the swatches pallet and name the swatch **Clear**. This is the default in some colour servers. It's very important to use the same swatch name across all applications you might use. The swatch name is **case sensitive**.
4. Designate the Colour type as **Spot**.
5. Set the Colour Mode to **CMYK: 0/100/0/0**. You can choose any of the 4 process colours and set it to **100%**.
6. Assign the colour **Clear** to fills and strokes of text or shapes created in InDesign and move them to the clear layer. To print clear over an image, text or graphic, set it to **overprint** so it will not knock out any image below. Select **Window > Attributes > Overprint Fill and/or Stroke**.

Graphics from Adobe Illustrator

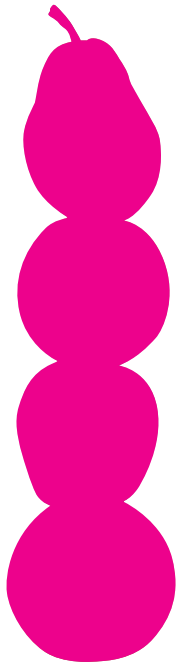
1. Copy and paste graphics from Illustrator into InDesign.
2. Designate the fill and/or line to be **Clear**.
3. Move all clear elements to the **clear layer**.
4. Set all clear elements to **overprint**.

Creating effects in Photoshop

To highlight an area of your image with a soft edge and/or a gradient fill, add a spot channel for clear to your Photoshop file. Save it as a TIFF or PSD file and place it into InDesign on the clear layer.

Creating a spot channel in Photoshop:

1. Create a new path or select a shape.
2. With your shape selected, add a new **spot channel**.
 - a. Name the new spot channel, use the same name as your clear ink swatch in InDesign.
 - b. Select **Colour > M 100%** or the same colour chosen in InDesign.
 - c. Select **% value** if desired.
3. Save as PSD or TIFF with **spot colour included**.
4. Place into InDesign on the **clear layer**.



Creating a high-res PDF

Create a PDF preset for saving high-res PDFs right out of InDesign.

1. From the main menu select **File > Adobe PDF Presets > Press Quality** and click **Save**.
2. **Compatibility > Acrobat 6**
On the lower right side check **> Create Acrobat Layer**.
3. Select **Compression**
Colour Images > **Do Not Downsample**
Compression > **JPEG**
Images Quality > **Maximum**
Grayscale Images > **Do Not Downsample**
Compression > **JPEG**
Images Quality > **Maximum**
Monochrome Images > **Do Not Downsample**
Compression > **CCITT Group 4**
4. Select **Marks and Bleeds**, if desired.

5. Select **Output > Colour**
Colour Conversion > **No Colour Conversion** Profile Inclusion Policy > **Include All RGB and Tagged source CMYK Profiles**.
Click on Ink Manager and make sure the box for All Spots to Process is unchecked.
Click on **Save Preset** and name it; we suggest **Intertype Clear Press PDF**.

Checking your PDF

1. Open your PDF in Acrobat® Professional
2. From the main menu select **Advanced > Print Production > Output Preview** and check **Simulate Overprinting**.
If your file is set up correctly all areas designated in Clear should be visible and on a separate layer. If you mouse over Clear areas the percentage should change.

Troubleshooting

1. If the Clear swatch colour has knocked out the image below, make sure that you have specified overprint. For raster images brought in from Photoshop, make sure the spot channel has been set up correctly in Photoshop. The name must match between all files.
3. If some areas print correctly but other parts have knocked out, make sure the clear layer is at the top of all layers and nothing sits above the clear elements. If your file seems to be set up correctly, see your print provider.

* Samples shown of a 'Copy of headline', 'Clear fill applied to rectangle', 'Path created in InDesign' & 'Adobe Illustrator graphic pasted into InDesign' all onto the clear layer. Clear fill applied and checked to overprint pasted in place on to the clear layer with Clear fill applied and checked to overprint.

Unit 45, 125 Highbury Road
BURWOOD VIC 3125

Telephone 03 9830 6619
Facsimile 03 9830 6621

Email contact@intertype.com.au
Website www.intertype.com.au

